

OWNED &
MANAGED BY

GROWTHPOINT
PROPERTIES



WOODMEAD

RETAIL PARK

LEASING GUIDE



01



GROWTHPOINT OVERVIEW



MANAGER & OWNER OF MALL

Our extensive and diverse portfolio of retail assets consists of quality, well-supported malls in major metropolitan areas that have a high renewal success rate.

From community shopping centres and lifestyle retail parks to large regional malls, they are a positive force for the local economy and society through their charity and community work, building strong connections with our shoppers.

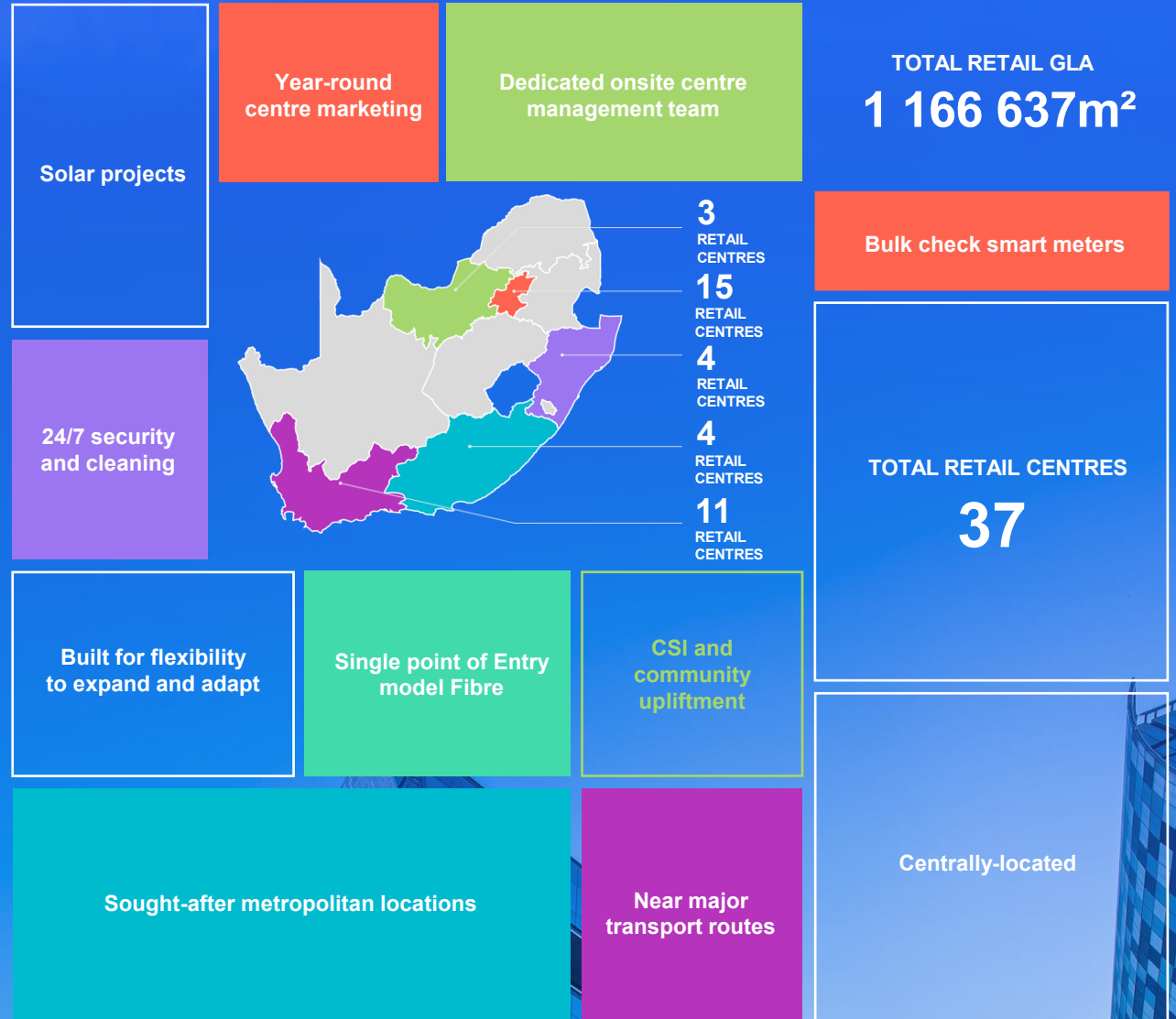


RETAIL PORTFOLIO OVERVIEW

Our retail properties give us access to valuable property data and retail statistics.

The data offers key insight into consumer behaviour patterns and allows us to offer an optimal mix of retailers that best serve the surrounding communities.

In addition, our shopping centres regularly undergo refurbishments and extensions, ensuring that they remain relevant and appealing to our shoppers.



02

MALL PROFILE



WOODMEAD RETAIL PARK

Woodmead Retail Park situated at the M1/N1 junction, offers a modern boulevard-style shopping experience with free parking, top national brands, and a diverse mix of fashion, décor, concept, and service-focused stores.

It is not only conveniently located but also offers patrons an upmarket shopping experience.





OFFERING

A well-balanced tenant mix of over 70 stores, which includes a massive 15,400m² Pick 'n Pay Hypermarket, Dis-Chem, full line Woolworths and Expert Diamond Corner, along with an array of other popular national tenants, ensures that visitors will find anything from a healthy breakfast to the latest gadgets at this popular centre.

Also boasting a variety of concept, décor, destination and service orientated stores, customers have every reason for returning to the 40 000m² Woodmead Retail Park week after week.



Small
Regional
Mall



TOTAL RETAIL GLA:

40 758m²



ANCHOR/MAJOR TENANTS:

Clicks
Pick n Pay
Woolworths



CATCHMENT AREA:

Woodmead
Buccleuch
Sunninghill
Kelvin
Midrand



8 Fashion
outlets

70 Retail stores &
eateries



11 Eateries



4 ATMs

7 Branches



42 National
retailers



1972

FREE
Parking Bays

SHOPPER PROFILE



AVERAGE
Shopper Age
34- 49

65% **35%**
Female Male

HOUSEHOLD CYCLE
78%
Full Nest

FOLLOWERS
Facebook
61 000

FOLLOWERS
Instagram
4 738

LSM (LIVING STANDARD MEASURE) **8 – 10+**

LANGUAGES MOST SPOKEN

Afrikaans

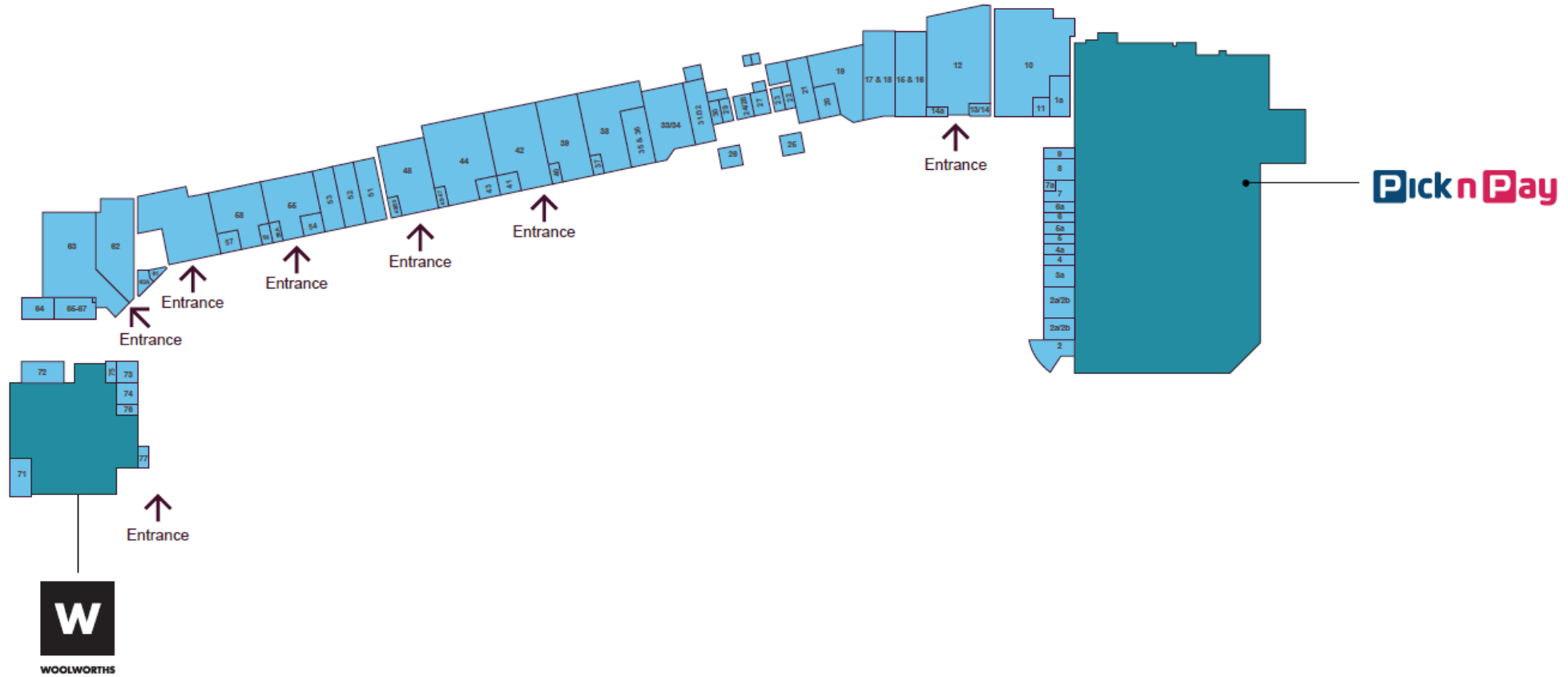
English

03

FLOOR PLANS



03 FLOOR PLANS



04

STORE LISTING



04 STORE LISTING



Banks & Services

Absa Bank
Old Mutual
Standard Bank
First National Bank
African Bank
Nedbank
Capitec Bank

Department Stores

Pick 'n Pay
Woolworths

Sport & Outdoor

Mr Price Sport

Gifts & Speciality Stores

The Crazy Store
Toys R Us
Geldhof Chocolatier
Waltons

Car Wash

Suparcharged
Carwash

Car Dealerships

We Buy Cars

Health & Beauty

Salon Nomsa
Barbernet
Clicks
Dischem
The Perfume Gallery
The Cosmetic Company Store
Kryolan
Sorbet

Optometric & Eyewear

Vision Works
Optometrists
Sunglass Hut
Execuspecs
Spec Savers

Cellular & Electronics

Vodashop
Cell C
HAQ Mobile
Malik Tech
Telkom
Chats Connect
MTN
Matrix Warehouse
Eden tech
Eden tech Kiosk
Expert Diamond Centre

Luggage & Travel

Cellini

Interior & Home

Volpes
Mr price home
Bed, Bath & Home
Dial-a-bed
Sheet street
Oriental Rugs
Kitchenique
Rochester
Sleep masters

Fashion & Accessories

Ackermans
Mario Casas
Mr Price
Cotton On
Cotton On Kids

Jewellery

Watch Republic
Lovisa
Pandora

Restaurants

Sharjah
Steers
Debonairs
Kung Fu Kitchen
Village Fish And Chips
Akhallowaya's
Mugg & Bean
Aman
Fournos Bakery
Pedros
Wimpy

Shoes

Froggie
Kingsmead
Exquisite Shoes

05



EXHIBITION, ADVERTISING & MARKETING OPPORTUNITIES





EXHIBITION / KIOSK OPPORTUNITIES

View the list of exhibition and kiosk space options at Woodmead Retail Park and secure short-term space to get your brand or products in front of our high traffic areas within the mall.



ADVERTISING OPPORTUNITIES

Get your product or brand in front of millions of shoppers while they're in shopping mode with media and promotional opportunities.



MALL MARKETING

Find out about shopper-focused marketing and promotional activities designed to drive footfall and maximise retail performance.



WOODMEAD RETAIL PARK

LEASING ENQUIRIES

OWNED &
MANAGED BY

GROWTHPOINT
PROPERTIES



Martie Zimmerman

CENTRE MANAGER

011 656 7000 | 082 330 2028

mzimmerman@growthpoint.co.za

1 Waterval Cres Street, Woodmead,
Sandton, 2191

www.facebook.com/woodmeadretailpark

www.woodmeadretailpark.co.za

